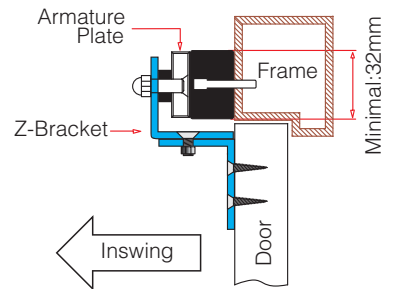
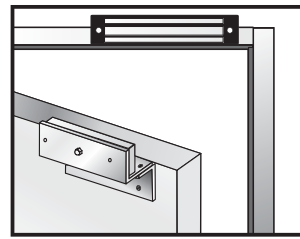
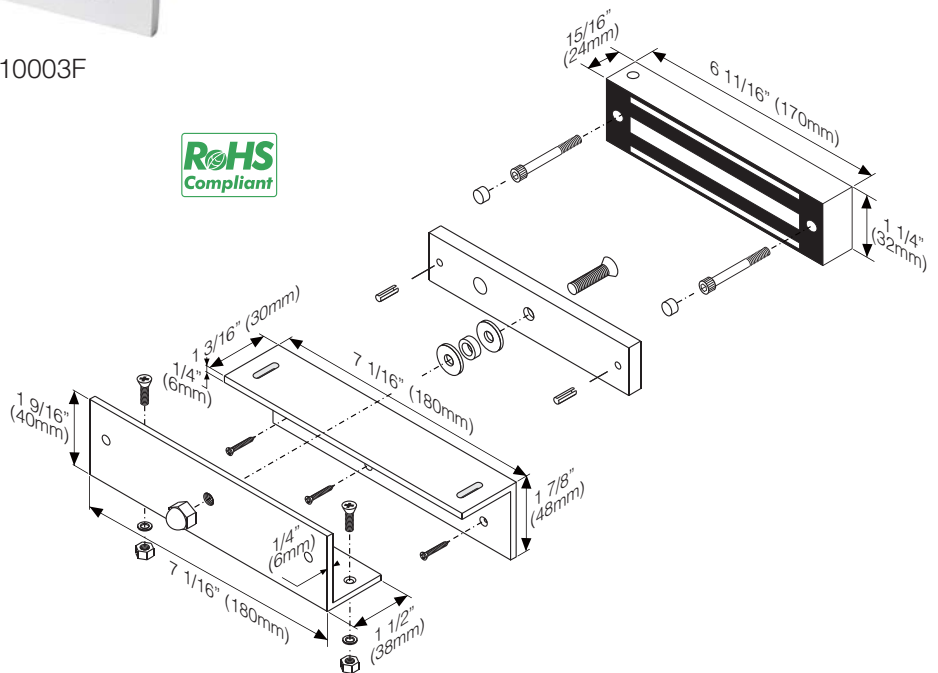


Inswing doors

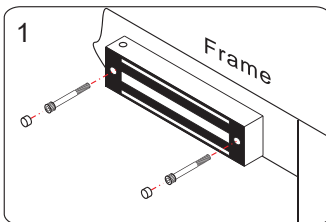
# Z-150 Bracket



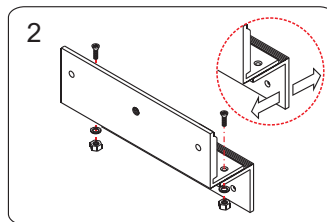
Application of Electromagnet: 10003F



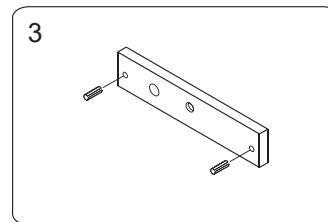
## Installation of Z bracket on inswing doors



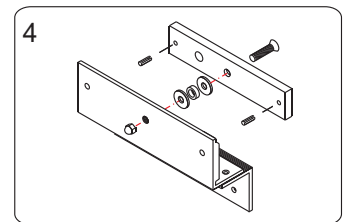
1 Install the electromagnet on the door frame. Make sure the door may be opened / closed.



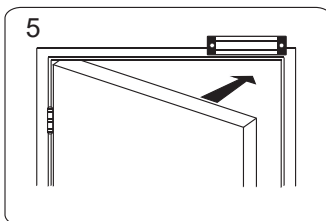
2 Assemble Z bracket. Make sure it is still loose.



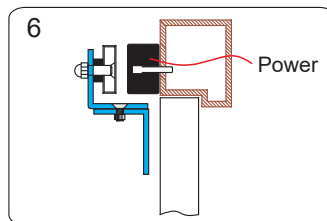
3 Insert the guide pins into the armature plate.



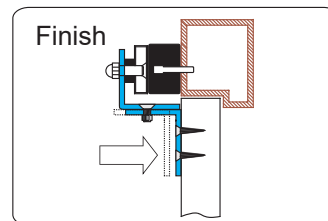
4 Fasten the armature plate to Z bracket. Insert the rubber washer between them.



5 Close the door and turn on the power.



6 Let the armature plate and electromagnet bond together.



Finish Press Z bracket to the door leaf and fasten it.