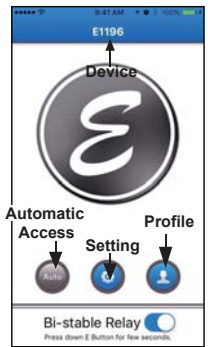


Getting Started With

E-Access® Applications E1196 App Instructions

E-Access E1196 App Instructions:

1



Introduction of App's Main Page Profile:

Enter a Master / User name for this phone only at the first time.

Setting:
E-Access Device Settings Page.

Device:
E-Access Device Name.

Auto: (Automatic Access for Handsfree):
Turn ON/OFF for the Automatic Access Handsfree function.

Bi-stable Relay:
When you select to enable Bi-stable function, you can press down the E button for few seconds to activate and keeps the door unlocked indefinitely. To return normal operation, press the E button again.

2



Click on the device name (e.g. E1196 as shown) and pull down all the available E-Access devices around you.

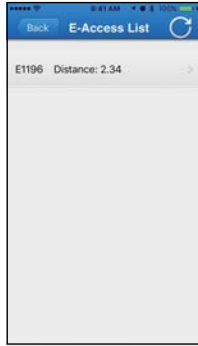
You can select a device from the list as shown, or you can press "Auto" in the list so that E-Access will operate with the closest E-Access device around you.

3



Enter personal name.

4



Master / User Logon E-Access:

Select an E-Access device from the E-Access List and enter the password given by the Master.

Logon Notes:

1. The Master / User must enter a correct Password to logon.
2. How to Reset/Change the Master account:
 - (1) Restart the power of E-Access device, and then enter the password 12345 (default) within 30 seconds.
 - (2) Next, click on the "Register" button to register, then return to the first page, and you then become the Master.

5



Master / User Logon E-Access:

Select an E-Access device from the E-Access List and enter the password given by the Master.

Logon Notes:

1. The Master / User must enter a correct Password to logon.
2. How to Reset/Change the Master account:
 - (1) Restart the power of E-Access device, and then enter the password 12345 (default) within 30 seconds.
 - (2) Next, click on the "Register" button to register, then return to the first page, and you then become the Master.

6



Master Setting Page:

Register:
You must click on Register button to complete registration before opening the door by your phone.

User List:
Only the Master can view/enable/delete all the Users and view User passwords.

Settings:
E-Access settings include Proximity Read Range, Device Name, Relock Time, and Delete all Users.

Backup:
Backup all Users data from the device.


Restore:
Restore the last backup data.

Change Password:
We recommend changing Master's password right after you reset/change the Master account. (Default Master password:12345)

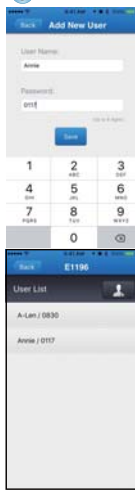
7



User List:

All authorized Users can be viewed on the User List. Click on  to add a new User.

8



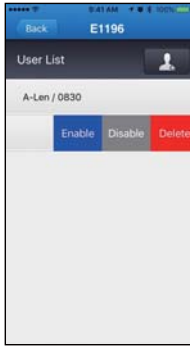
Add New User:

Add User Name:
The Master enters a User name.

Password:
The Master assigns a password for the new User to register on E-Access system.

The new user will be shown on the User list.

9



Master can slide from right to left so a User can be Enabled /Disabled/Deleted by the Master.

Enable:
Enable a User account.

Disable:
Disable a User account.

Delete:
Delete a User account.

10



Settings Page

E-Access Name:
Edit the E-Access name.

Relock Time (sec):
Set the time for relock time.

Enable/Disable All Users:
Enable or disable all User accounts except the Master.

Delete All Users:
Delete all User accounts except the Master.

Proximity Read Range (from 0 to 50 meters):
Set proximity read range for hands-free automatic access.

Scan the QR-code to download E-Access E1196 App or Search "E-Access E1196" to download.



Scan the QR-code to download E1196 Instructions.



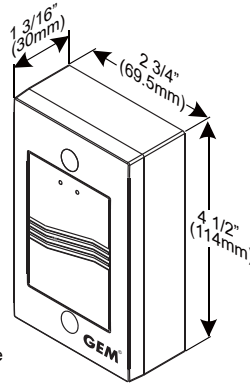
Specifications

- Power: 12 to 24VDC, 50mA, 1W.
 - Surface mounted and anti-tailgate protected
 - Bluetooth Low Energy 4.0 Standard
 - Operating distance: 50 meters
 - Proximity distance: 50 meters (configurable, for hands-free operation)
 - Operating Temperature: -10° to + 40°C
 - Relay current: 5A max
 - 1 Master , 196 Users.
 - Bi-stable relay function keeps the door unlocked indefinitely
 - LED Lights:
 - Blue (Bluetooth is active) ◦ Green (Unlock status)
 - Red (Power reset)
 - Buzzer: 85 dBA, Ideal to warn of prolonged door open
 - 1 Master, 196 users
 - To reset/change the Master account, restart the power of E-Access device, and then enter the password 12345 (default) within 30 seconds to log onto the E-Access system. Complete the registration and the Master account is reset/changed.
- Note:** To skip the 30 sec wait, press an exit button that you may have already installed, and the LED light on the reader will then change from Red to Blue.

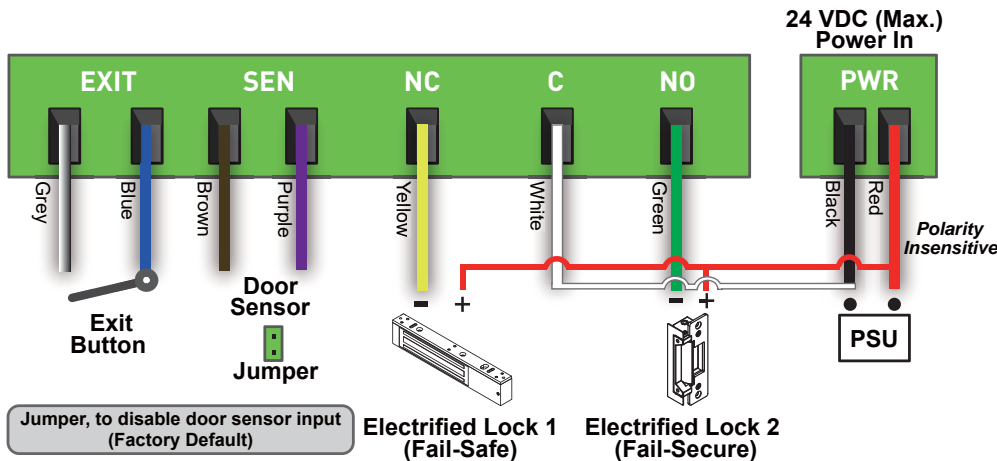
Unlocking Door from Smartphone

- Manual Operation: After registration is completed, press the E button on the main page to unlock the door.
- Automatic Access Operation: After registration is completed, set proximity read range, and then turn on automatic access function on the main page for hands-free access.

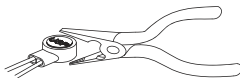
Dimensions



Wiring Instructions



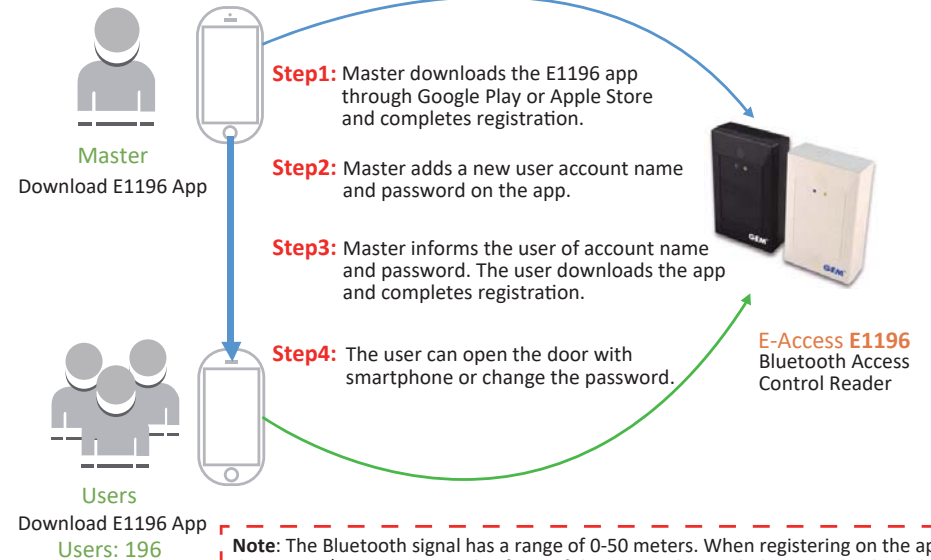
Crimp connectors included:



Crimp Connector →

Use a pair of crimping pliers designed to crimp insulated connectors.

Place the crimp connector into the compression slot. Be sure the crimping jaws are positioned over the stripped portion of the wire. Squeeze the handles together with enough force to crush the end of the butt splice.



Registration Instructions

	Master	User
Step 1	Download the E1196 app.	Download the E1196 app.
Step 2	Open the app, tap the device name button, and select the closest E-Access device from the device list .	Open the app, tap the device name button, and select the closest E-Access device from the device list .
Step 3	Enter Master name and logon password (default 12345) .	Enter User name and logon password given from Master.
Step 4	Click "Register" to complete registration.	Click "Register" to complete registration.

Compatibility:



Requires iOS 9.0 and up



Requires Android 4.4 and up

Download E1196 App

Scan the QR-code to download E-Access E1196 App or Search "E-Access E1196" to download.

