

GK250 Series Electric Strike Installation Instructions

Features

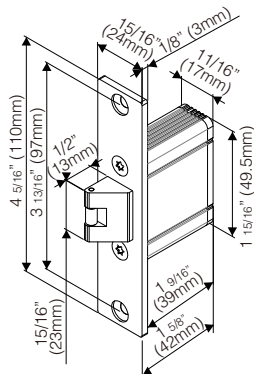
- Secure, economical and durable solution for gates
- Water drainage function for gates or semi-outdoor applications
- Zinc alloy construction
- Use with bored cylindrical locksets or GEM LS-2200 door latch
- Available with 2 faceplate options

Specifications

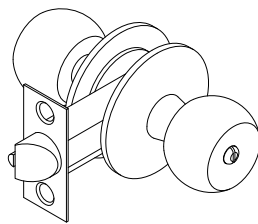
- Voltages:
12 or 24 VDC Continuous, or 12 or 24 VAC Intermittent Duty,
3~6VDC or 8~16 VAC Intermittent Duty
(Intermittent use: Not to exceed 10 seconds)
(Continuous use: For a longer period of 10 seconds to indefinite)
- Operating Temperature: 14°F~120°F (-10~49°C)
- Humidity: 0~85% non-condensing
- Latch Throw: 1/2" (13mm)
- Cycle Test: 250,000+ cycles
- Lock Mode: Fail-secure(GK250), Fail-safe(GK255)
- Keeper Width: 1 5/16" (33mm)
- Holding Force: 500 lbs (227Kg)
- Faceplate finish: Stainless steel
- Weight: 270g

Compatible Locks

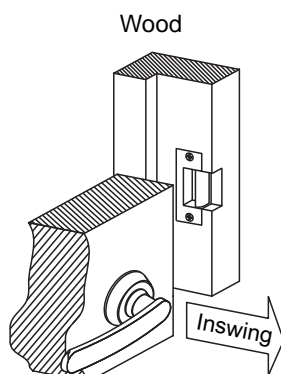
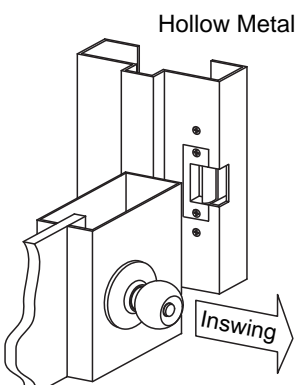
GEM LS-2200 Door Latch
(Sold separately)



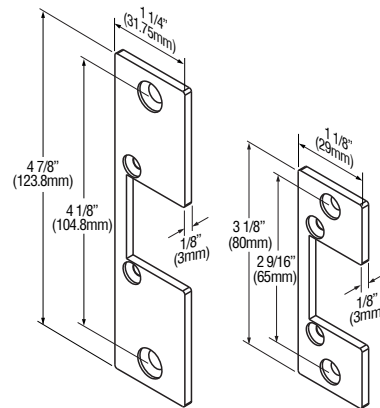
Cylindrical Lock



Frame Applications

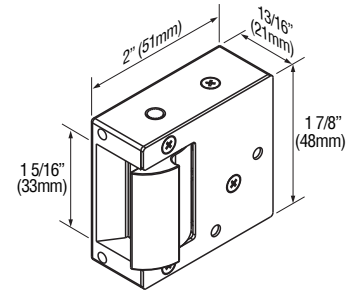


Faceplate Options

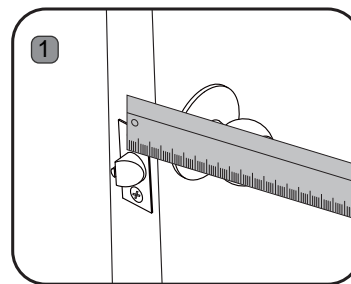


A. P-FP-GK251-US (For ANSI jambs) B. P-FP-GK250

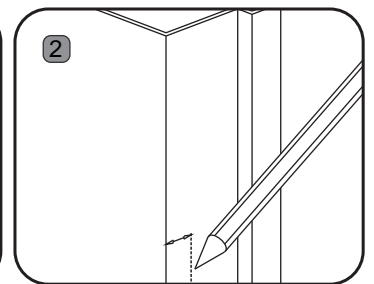
Electric Strike Dimensions



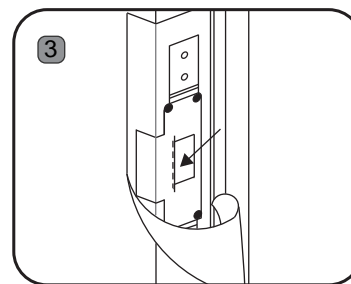
Electric Strike Installations



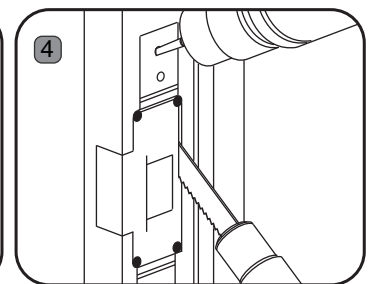
Measure latch position



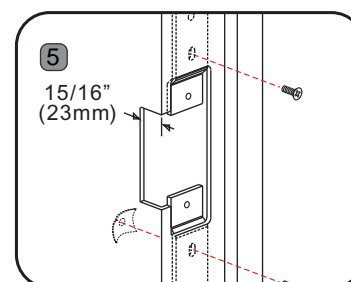
Mark latch position line



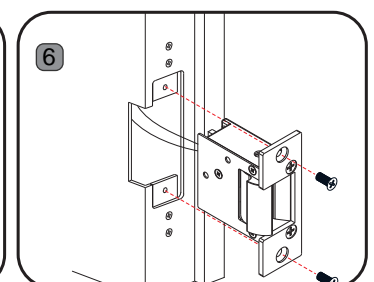
Attach sticker template to the marked center line



Drill and cut the frame according to the template



Attach mounting tabs if needed



Connect the wires, and install the strike