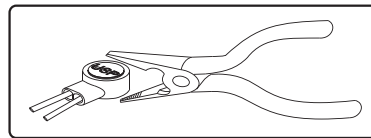
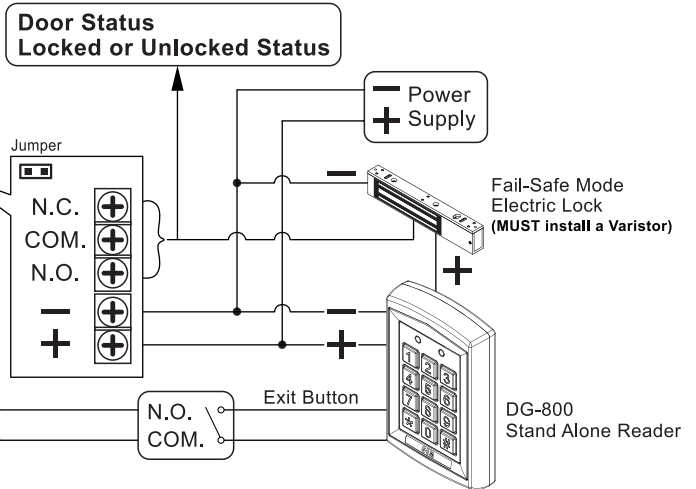
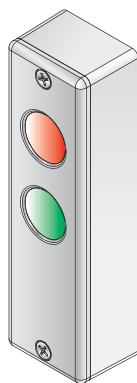
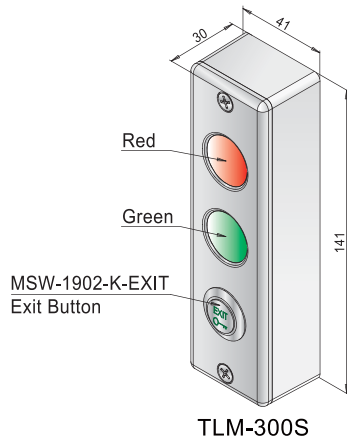


TLM-300S/400S

Door Status Indicator

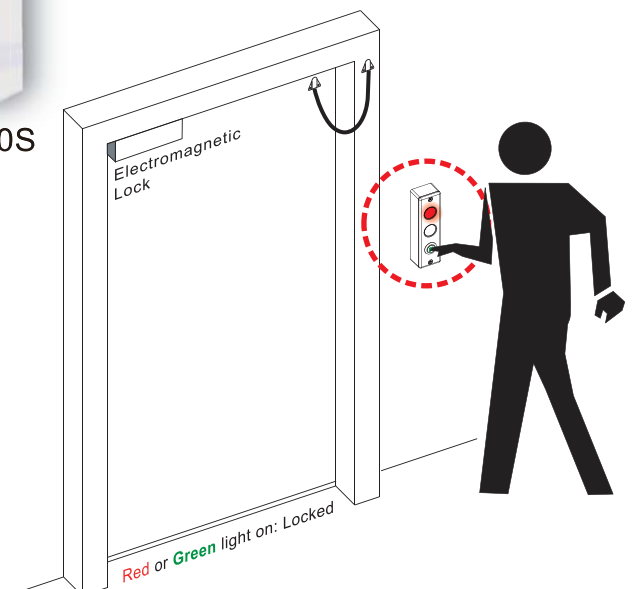
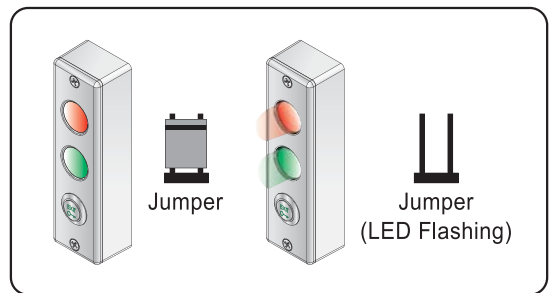
(Zinc Alloy w/powder coated finish)

Operating Voltage 12/24VDC
Current Draw 40mA/12VDC
50mA/24VDC



Butt Splice (IDC) Connector

Place the wire inside the connector and use a crimp pliers to press down on the head of the connector evenly.



Changeable LED color for locked or unlocked status